



SAFETY · QUALITY · EFFICIENCY · INNOVATION · PROFESSIONALISM · PRIDE · LOYALTY · DEVELOPMENT
TEAMWORK · RESPECT · LEADERSHIP · NO BLAME · DEDICATION · FINANCIAL MANAGEMENT · FAMILY · FUN
FOCUS ON CLIENTS · SAFETY · QUALITY · EFFICIENCY · INNOVATION · PROFESSIONALISM · PRIDE · LOYALTY
DEVELOPMENT · TEAMWORK · RESPECT · LEADERSHIP · NO BLAME · DEDICATION · FINANCIAL MANAGEMENT
FAMILY · FUN · FOCUS ON CLIENTS · SAFETY · QUALITY · EFFICIENCY · INNOVATION · PROFESSIONALISM
PRIDE · LOYALTY · DEVELOPMENT · TEAMWORK · RESPECT · LEADERSHIP · NO BLAME · DEDICATION
FINANCIAL MANAGEMENT · FAMILY · FUN · FOCUS ON CLIENTS · SAFETY · QUALITY · EFFICIENCY · INNOVATION
PROFESSIONALISM · PRIDE · LOYALTY · DEVELOPMENT · TEAMWORK · RESPECT · LEADERSHIP · NO BLAME
DEDICATION · FINANCIAL MANAGEMENT · FAMILY · FUN · FOCUS ON CLIENTS · SAFETY · QUALITY · EFFICIENCY
INNOVATION · PROFESSIONALISM · PRIDE · LOYALTY · DEVELOPMENT · TEAMWORK · RESPECT · LEADERSHIP
NO BLAME · DEDICATION · FINANCIAL MANAGEMENT · FAMILY · FUN · FOCUS ON CLIENTS · SAFETY · QUALITY
EFFICIENCY · INNOVATION · PROFESSIONALISM · PRIDE · LOYALTY · DEVELOPMENT · TEAMWORK · RESPECT
LEADERSHIP · NO BLAME · DEDICATION · FINANCIAL MANAGEMENT · FAMILY · FUN · FOCUS ON CLIENTS
SAFETY · QUALITY · EFFICIENCY · INNOVATION · PROFESSIONALISM · PRIDE · LOYALTY · DEVELOPMENT
TEAMWORK · RESPECT · LEADERSHIP · NO BLAME · DEDICATION · FINANCIAL MANAGEMENT · FAMILY · FUN
FOCUS ON CLIENTS · SAFETY · QUALITY · EFFICIENCY · INNOVATION · PROFESSIONALISM · PRIDE · LOYALTY
DEVELOPMENT · TEAMWORK · RESPECT · LEADERSHIP · NO BLAME · DEDICATION · FINANCIAL MANAGEMENT
FAMILY · FUN · FOCUS ON CLIENTS · SAFETY · QUALITY · EFFICIENCY · INNOVATION · PROFESSIONALISM
PRIDE · LOYALTY · DEVELOPMENT · TEAMWORK · RESPECT · LEADERSHIP · NO BLAME · DEDICATION
FINANCIAL MANAGEMENT · FAMILY · FUN · FOCUS ON CLIENTS · SAFETY · QUALITY · EFFICIENCY · INNOVATION
PROFESSIONALISM · PRIDE · LOYALTY · DEVELOPMENT · TEAMWORK · RESPECT · LEADERSHIP · NO BLAME
DEDICATION · FINANCIAL MANAGEMENT · FAMILY · FUN · FOCUS ON CLIENTS · SAFETY · QUALITY · EFFICIENCY
INNOVATION · PROFESSIONALISM · PRIDE · LOYALTY · DEVELOPMENT · TEAMWORK · RESPECT · LEADERSHIP
NO BLAME · DEDICATION · FINANCIAL MANAGEMENT · FAMILY · FUN · FOCUS ON CLIENTS · SAFETY · QUALITY
EFFICIENCY · INNOVATION · PROFESSIONALISM · PRIDE · LOYALTY · DEVELOPMENT · TEAMWORK · RESPECT

SAFETY · QUALITY · EFFICIENCY

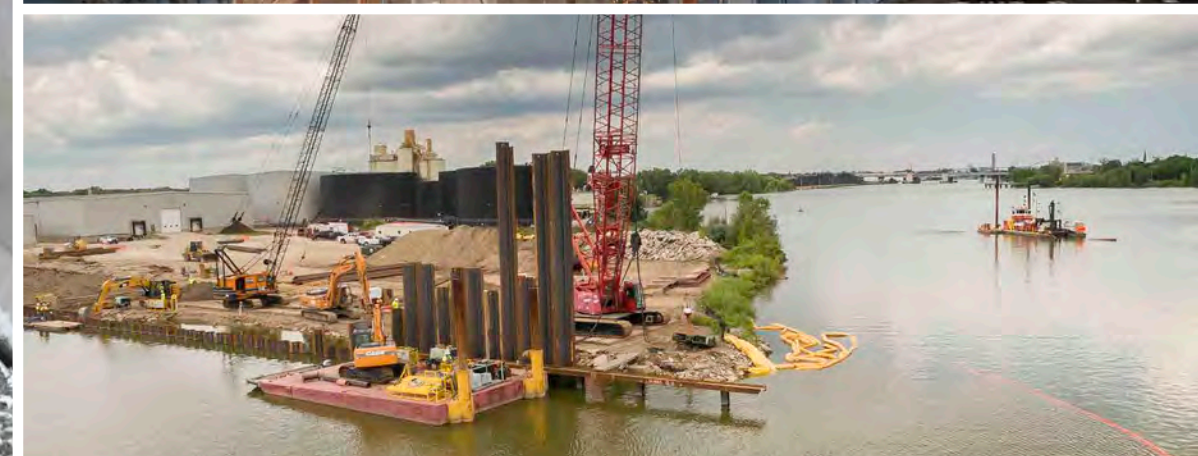
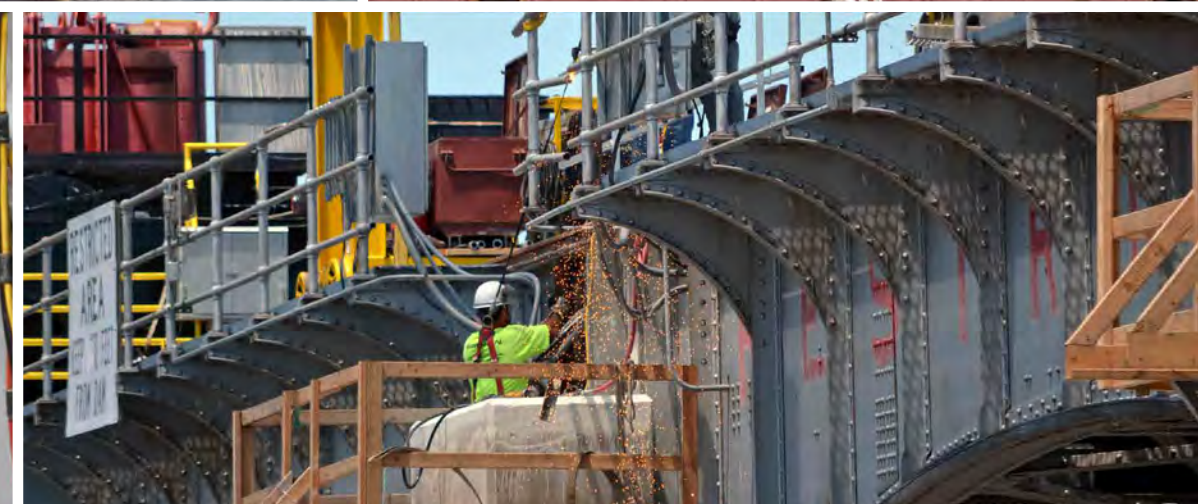
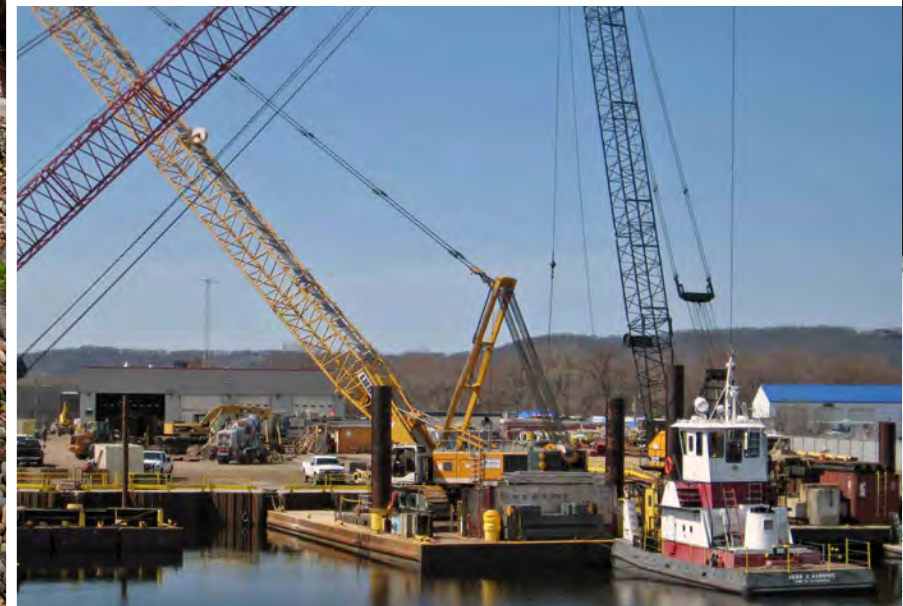




MARINE PROFESSIONALS SINCE 1919

Brennan is a marine construction, environmental remediation, and harbor management company focused on providing quality services to both public and private owners of marine-based infrastructure. Our focus on safety and quality is unmatched in the industry, and our ability to innovate has enabled us to exceed expectations and routinely deliver greater value to our clients.

For over 95 years Brennan has worked closely with clients and engineering firms through high levels of integrity and professionalism. Our approach results in an extraordinary amount of transparency throughout our projects and operations, and leads to a collaborative environment for all stakeholders. At Brennan, we understand that success is not only measured by the outcome, but also through the process by which the outcome is achieved.



SAFETY
EVERYTHING BEGINS WITH
SAFETY





SAFETY

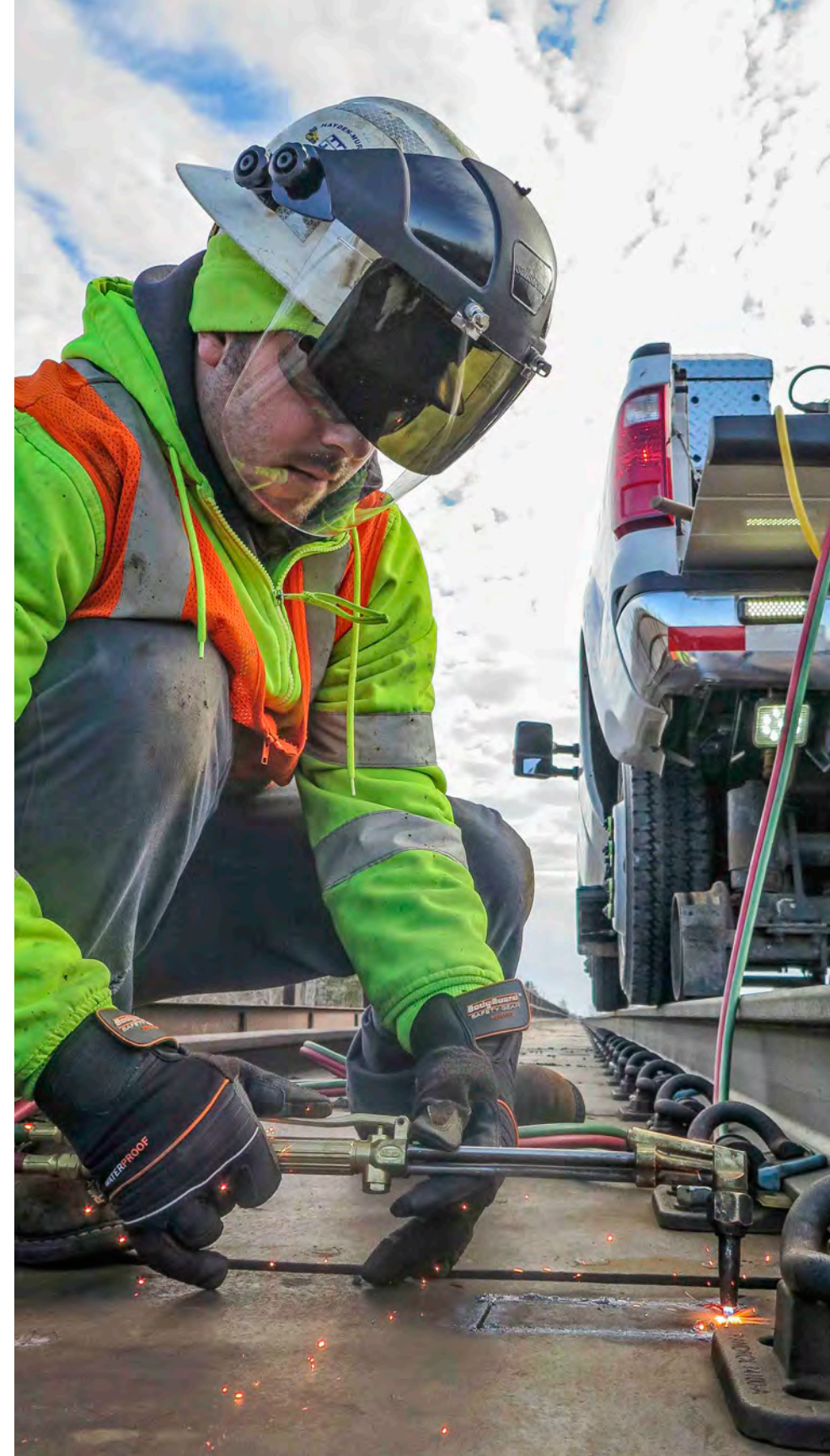
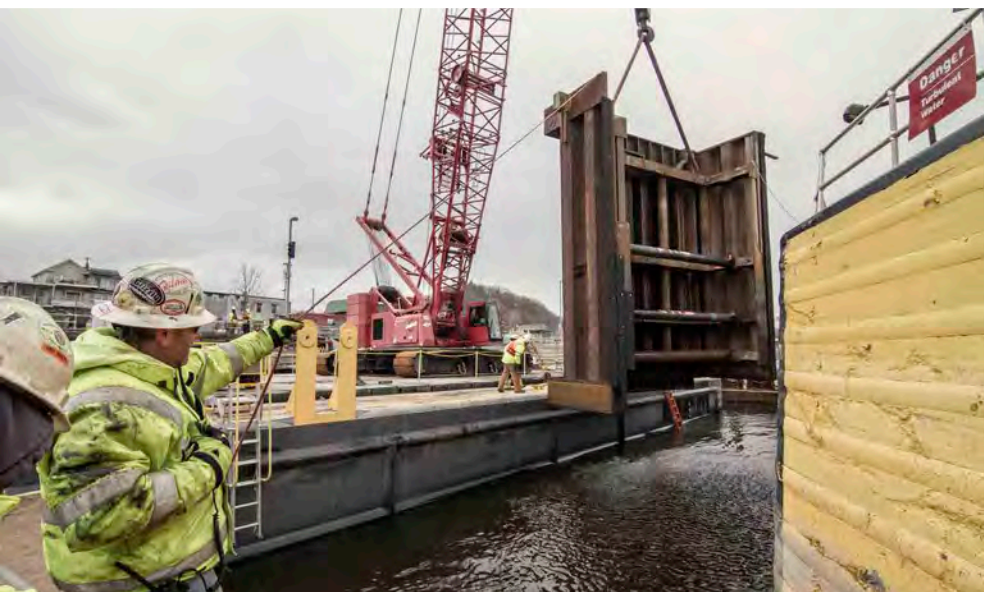
QUALITY

EFFICIENCY

Nearly everything we do takes place around the water, and as a result we have the right people, equipment, and programs necessary to mitigate associated risks.

Brennan's world-class safety program is specifically designed to address the risks found in the inland marine and heavy construction industries. This program lays the groundwork for our safety culture by looking forward, not backward, to define corporate guidelines and empower the individual. Extensive training, regular meetings and heavy investment in new safety equipment are just a few of the areas on which we focus. Our ground-breaking Safety Based Observation Program (SBO) collects hundreds of observations from all of our project sites and statistically analyzes potential risks so they can be corrected BEFORE an incident occurs. This program is a driving factor for our exceptional Experience Modification Rating (EMR), low Incident Rates, and other safety measurements that are industry leading in all of our respective markets.

Working around the water with heavy machinery also carries an elevated level of environmental risk. At Brennan, we are especially cognizant of the impact we have on the sensitive environments in which we operate. Because of this, all of our crews are trained and outfitted with the knowledge and tools they need to ensure that our work preserves the surrounding environmental conditions at each of our project locations.



ENVIRONMENTAL SERVICES

RECLAIMING AMERICA'S WATERS
FOR FUTURE GENERATIONS





ENVIRONMENTAL SERVICES

- » Environmental Dredging
- » Material Separation, Dewatering & Water Treatment
- » Wetland Remediation
- » Insitu Sand Covers & Capping
- » Habitat Restoration
- » Hydrographic Survey
- » Containment & Isolation Barriers

J.F. Brennan Company offers flexible approaches and innovative solutions to successfully restore contaminated waterways and wetlands. Through hydraulic, mechanical, amphibious, and diver-assisted micro dredging we have emerged as an industry leader in environmental dredging, transport and disposal. Our clients can expect us to not only deliver a successful outcome, but a well-coordinated, collaborative process in which it is achieved.

Our portfolio is filled with successfully completed projects that have surpassed remedial goals and raised industry standards. We achieve project goals by coordinating closely with all stakeholders and investing in the research and design of new and innovative tools. One example is our Broadcast Spreader System (BCS™) that has been used to efficiently place accurately located, multi-layered insitu caps, in precise thicknesses, over more than 1,200 acres. We have also developed specialty hydraulic dredge attachments, environmental excavation buckets and large scale amphibious transport vehicles that have been used to surpass targeted post-dredge contaminate concentrations on several projects.

MARINE
CONSTRUCTION SERVICES
MODERNIZING & STRENGTHENING
WATER-BASED INFRASTRUCTURE



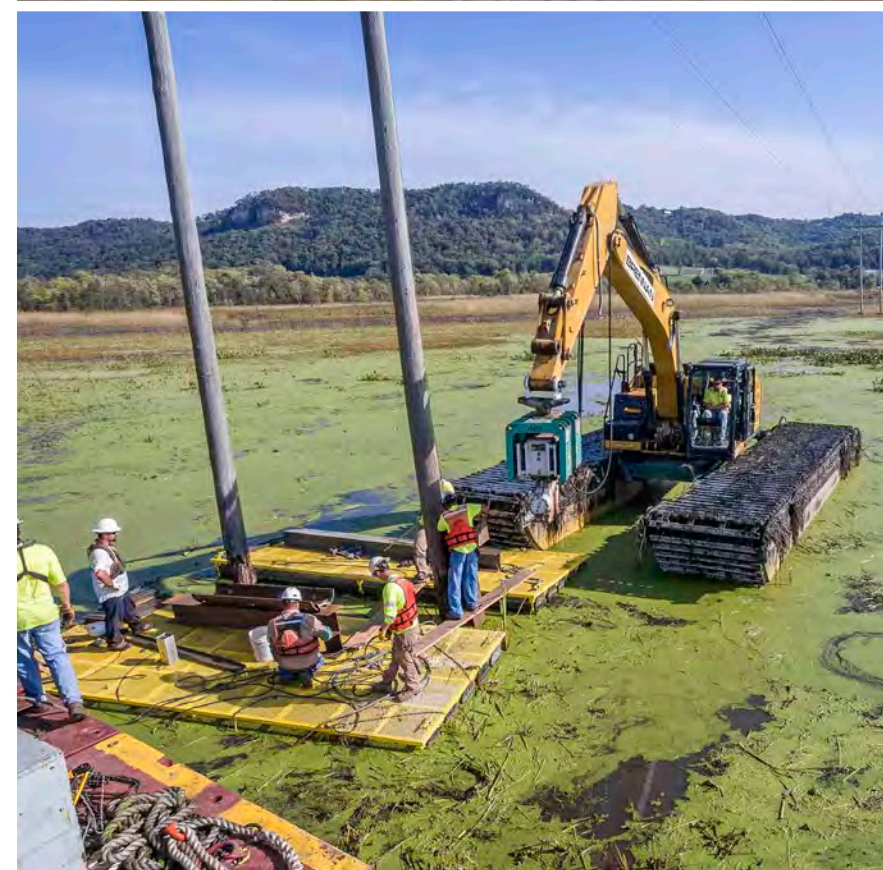
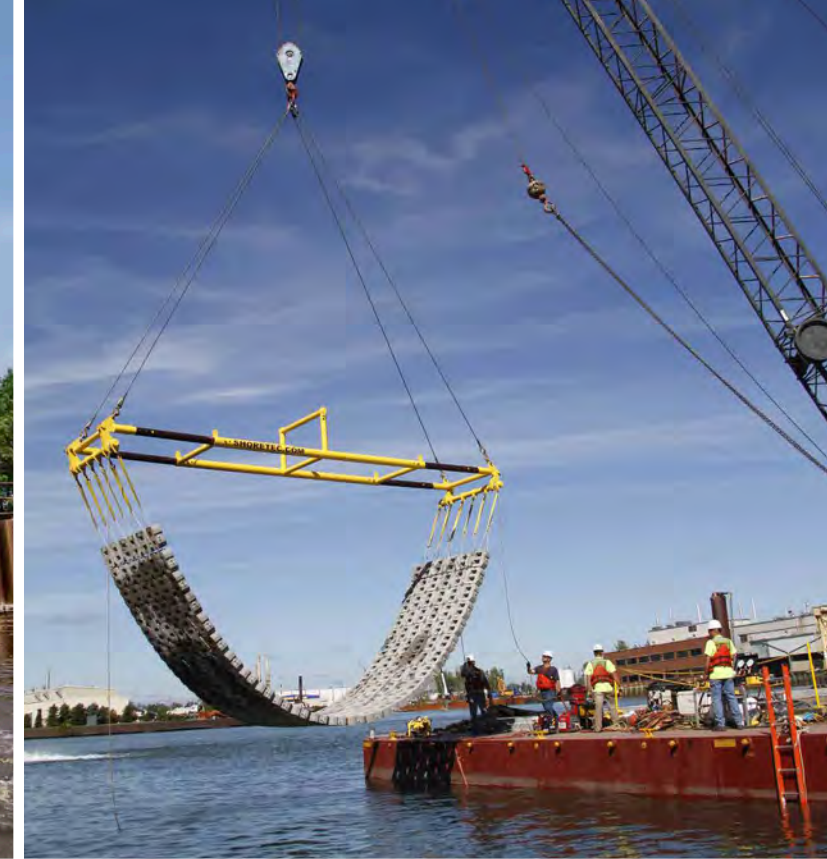


MARINE CONSTRUCTION

- » Industrial Docks & Barge Terminals
- » Mooring Structures & Protection Cells
- » Heavy Civil Construction
- » Dredging
- » Marine Support
- » Pile Driving
- » Scour & Erosion Remediation
- » Underwater Construction
- » Underwater Inspections & Survey

Nearly 100 years ago, Brennan began as a small construction company along the banks of the Upper Mississippi River. Since then we have evolved into a diversified service provider to those who own and operate marine-based infrastructure throughout the United States. Whether we approach it from land or from the water, we can offer flexible solutions that best fit each project. Our large fleet of specialized marine equipment allows us to safely access structures located remotely. This fleet includes large, load-lined equipment that can be used along navigable waterways, and smaller portable marine plants that can be used in isolated bodies of water.

Our ability to provide innovative ideas that focus on both above and below water construction techniques will add value to any heavy civil construction project. We serve both the public and private market sectors and are able to aid in the development of cost effective repair and construction options without sacrificing quality.





DAM
CONSTRUCTION SERVICES
CRITICAL INFRASTRUCTURE FOR
OUR MOST CRUCIAL RESOURCE

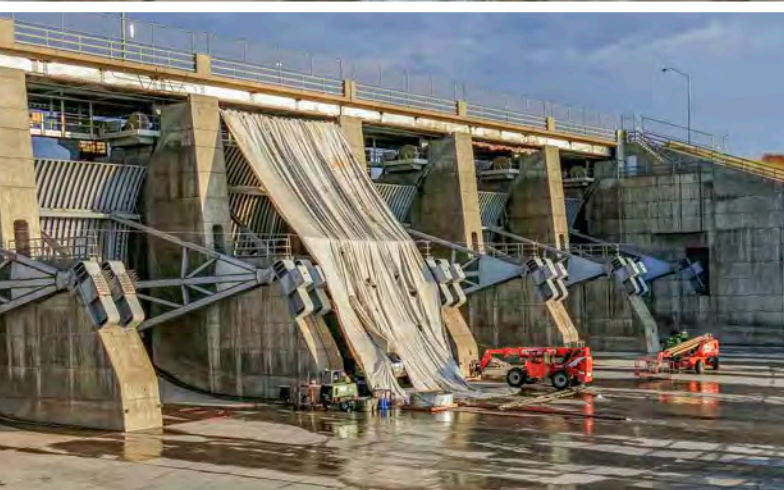
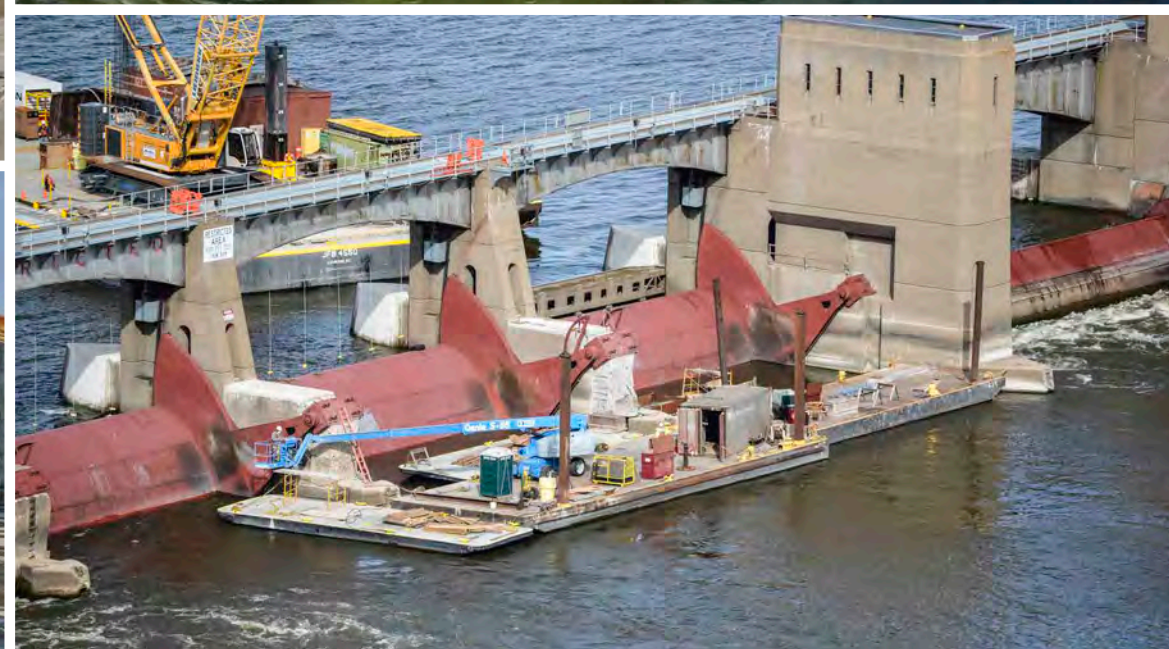


DAM CONSTRUCTION

- » Concrete Services
- » Gates & Actuators
- » Structural Steel
- » Underwater Construction
- » Cofferdams
- » Scour & Erosion Remediation
- » Specialty Construction
- » Underwater Inspections & Survey

Dams control, conserve and harness mankind's most critical resource, water. For over 50 years J.F. Brennan Company has specialized in preserving and replacing this crucial type of infrastructure. These structures include dams used for hydroelectric generation, navigation, industrial uses, water consumption, irrigation, and more. As one of the most important types of critical infrastructure in which no two are alike, we strive to understand each individual structure and all the associated challenges. It is our objective to be a resource to our clients and their engineering firms, where we can provide multiple alternatives and insight for repair and construction projects.

We bring a unique set of skills specifically tailored to dam structures, which benefits all stakeholders. Beginning with the design process, we use the latest technologies for underwater inspections and hydrographic surveys to provide a clear picture of existing conditions. From there we are able to assist the client's designated engineer to develop alternative work scopes and associated pricing estimates. When the project moves to construction we are able to self-perform high quality above and below water construction services.



COMMERCIAL
DIVE SERVICES
UNDERWATER CONSTRUCTION AND
INSPECTION EXPERTS



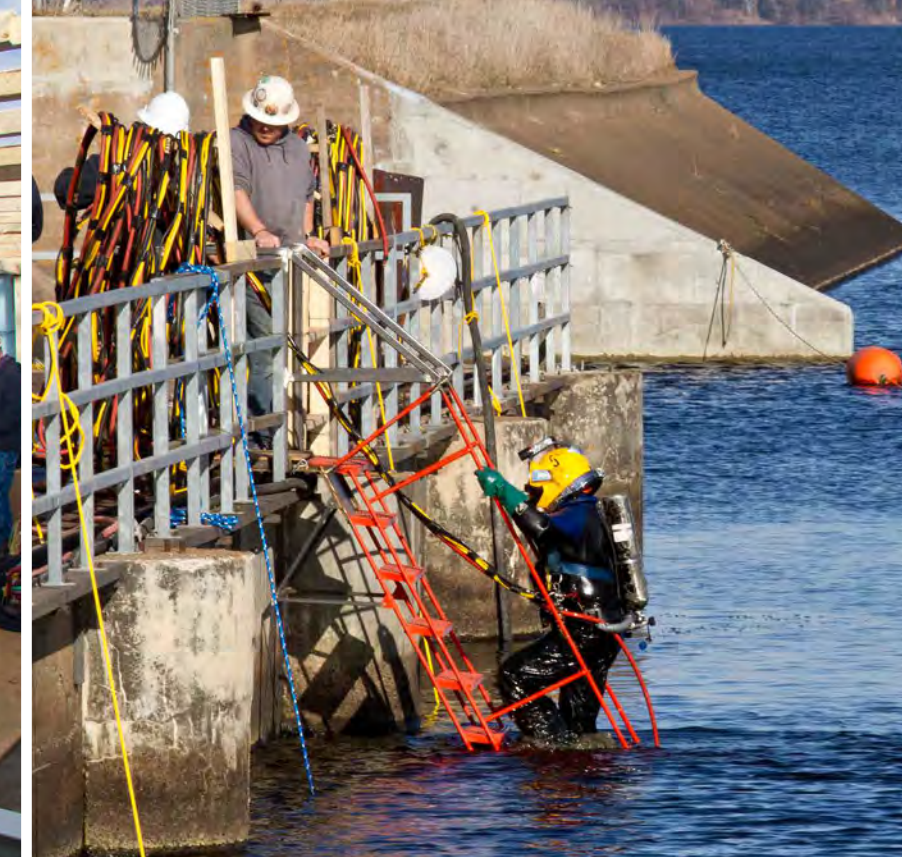


DIVING SERVICES

- » Concrete Services
- » Structural Steel Assembly
- » Underwater Construction
- » Underwater Inspections
- » Welding & Burning
- » Cofferdam Installation
- » Salvage & Marine Support
- » Scour Repairs
- » Ship Husbandry

Brennan has over 30 experienced divers backed by one of the largest fleets of marine equipment in the United States. All of our divers are Association of Diving Contractors International (ADCI) certified, which means that we adhere to stringent regulatory provisions regarding crewing requirements, equipment needs, and safety criteria. Using cutting edge technologies and well planned procedures, Brennan can successfully complete even the most difficult underwater challenges.

Our dive teams are familiar with both water-based infrastructure and construction techniques. This gives us the ability to provide owners and engineers quality underwater inspections that furnish the critical information to allow them to assess the conditions of their assets. As underwater construction experts, Brennan divers carry-out a multitude of specialty services that includes concrete placement, welding, burning, and more. With several teams based throughout the Midwest, our dive teams can mobilize quickly and efficiently to anywhere in the country.



HARBOR MANAGEMENT
MAXIMIZING EFFICIENCY OF
THE INLAND WATERWAYS





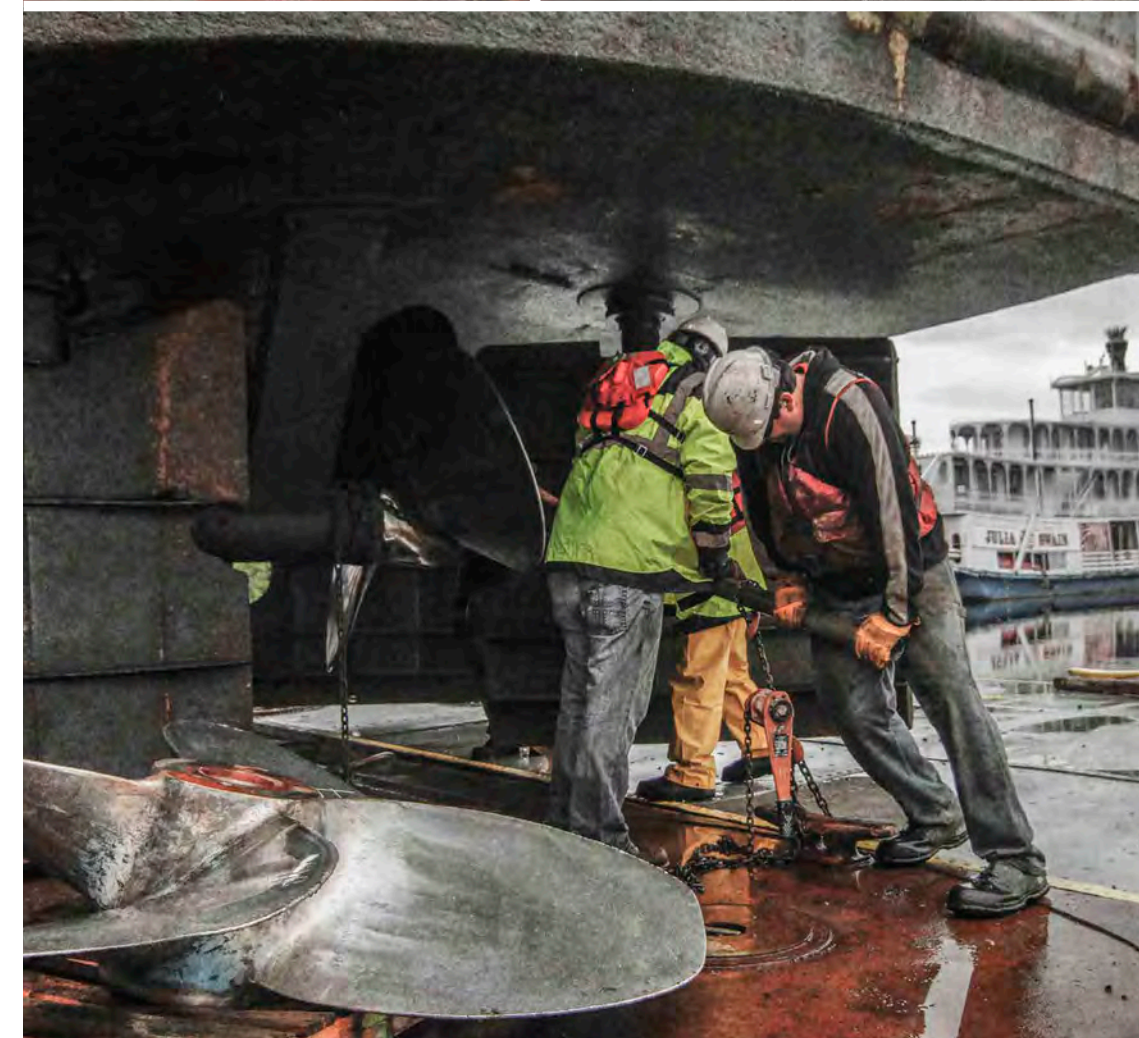
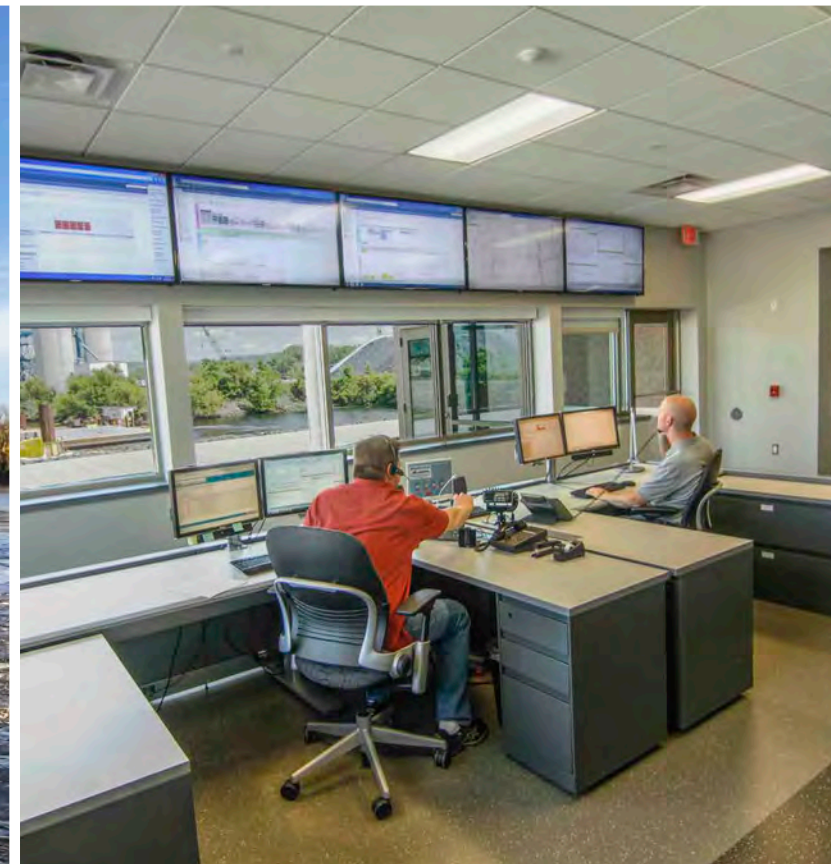
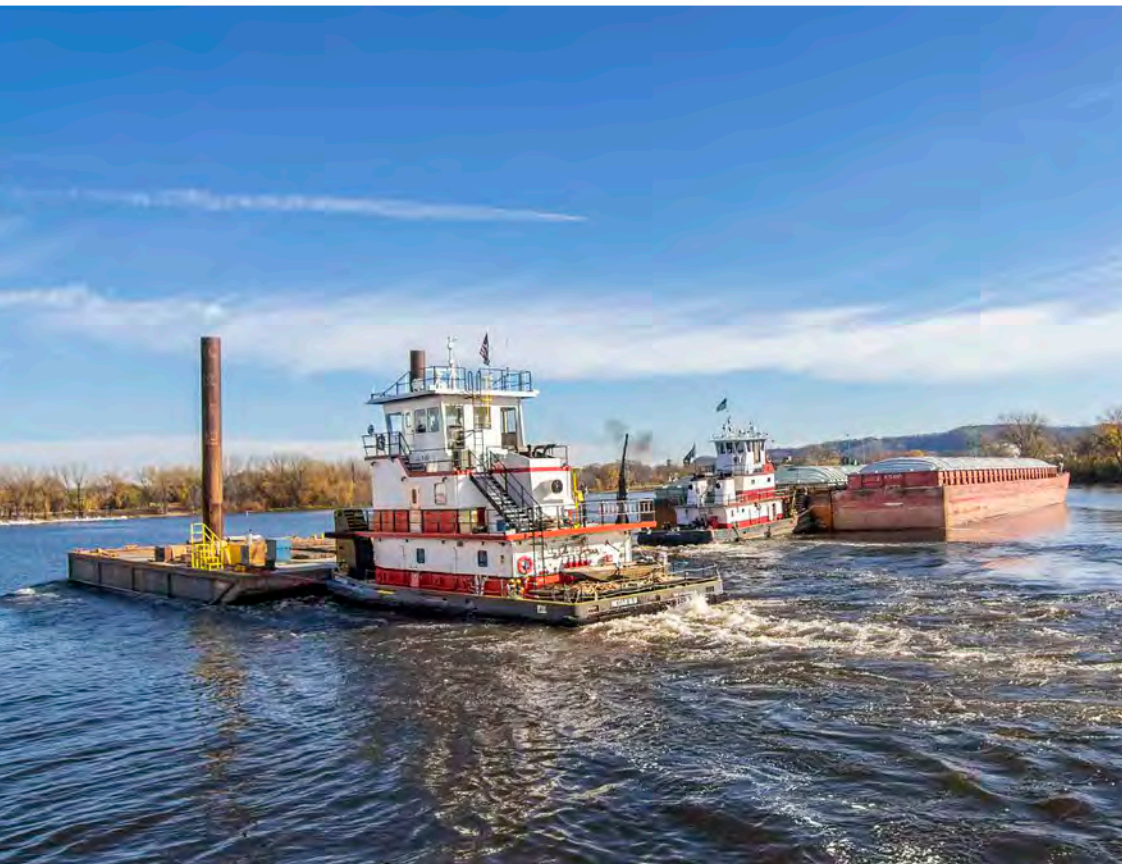
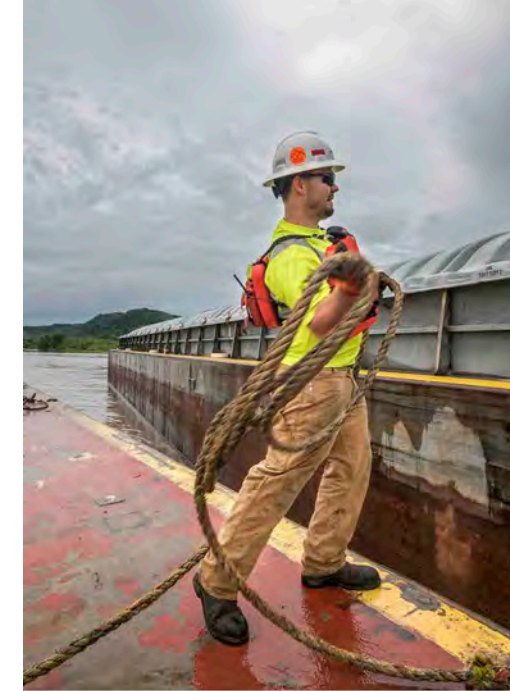
HARBOR MANAGEMENT

- » Fleeting & Switching
- » Dry Dock Vessel & Barge Repairs
- » 24 Hour Dispatch Services
- » Lightering
- » Short Haul Towing
- » Towboat Assists

Brennan Marine Inc. is a leading service provider of harbor management services along the inland river systems. Based on the Upper Mississippi River at UMR 697, our operations cover over 500 miles to include several inland ports. Our new 24-hour Dispatch Center uses state-of-the-art technologies to coordinate crews, barge movements and towboat assists. We have the systems and crews in place to react quickly to both carriers and individual terminals, minimizing downtime on both ends of the switching process. Our portfolio of operations include the movement of several million tons of cement, coal, salt, grain, and other bulk commodities.

All vessels operated by Brennan Marine are U.S. Coast Guard inspected, and range in horsepower between 750 to 1,800 HP. We are compliant with the American Waterway Operators' Responsible Carrier Program (AWO-RCP) and constantly look for innovative methods to increase safety and performance.

Brennan also owns and operates the largest floating dry dock north of St. Louis, where we provide quality vessel and barge repair services to carriers, other harbor operations, private companies, and the Federal Government.



RAILROAD SERVICES
A RESOURCE TO THE
RAILWAYS





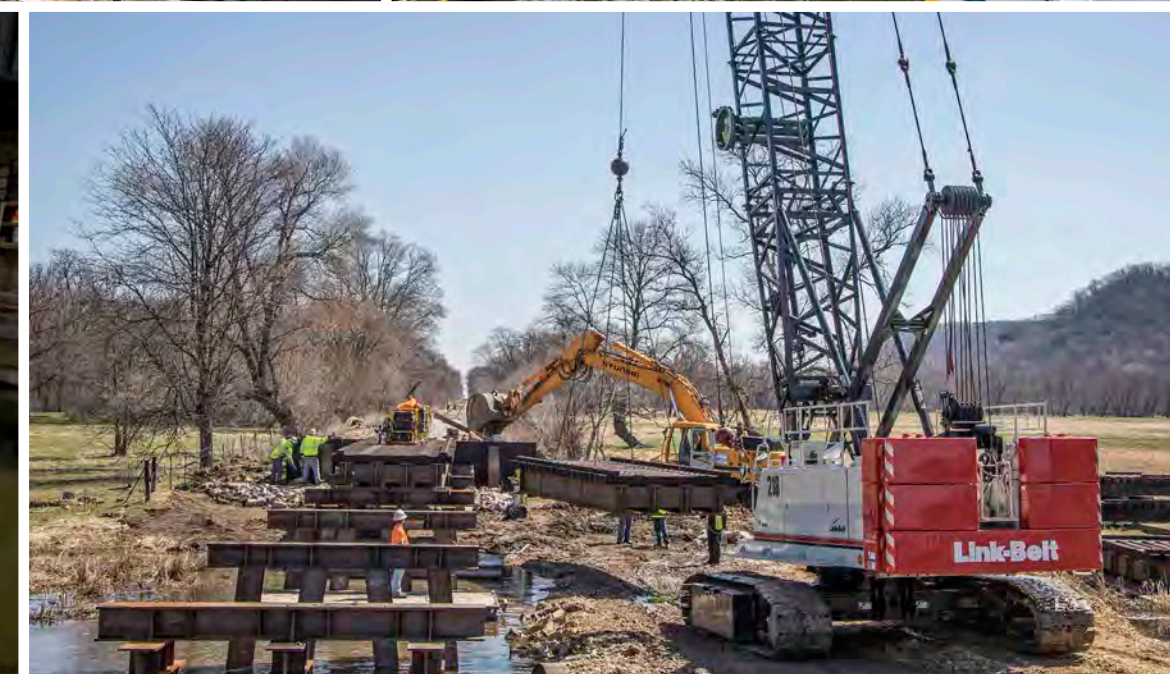
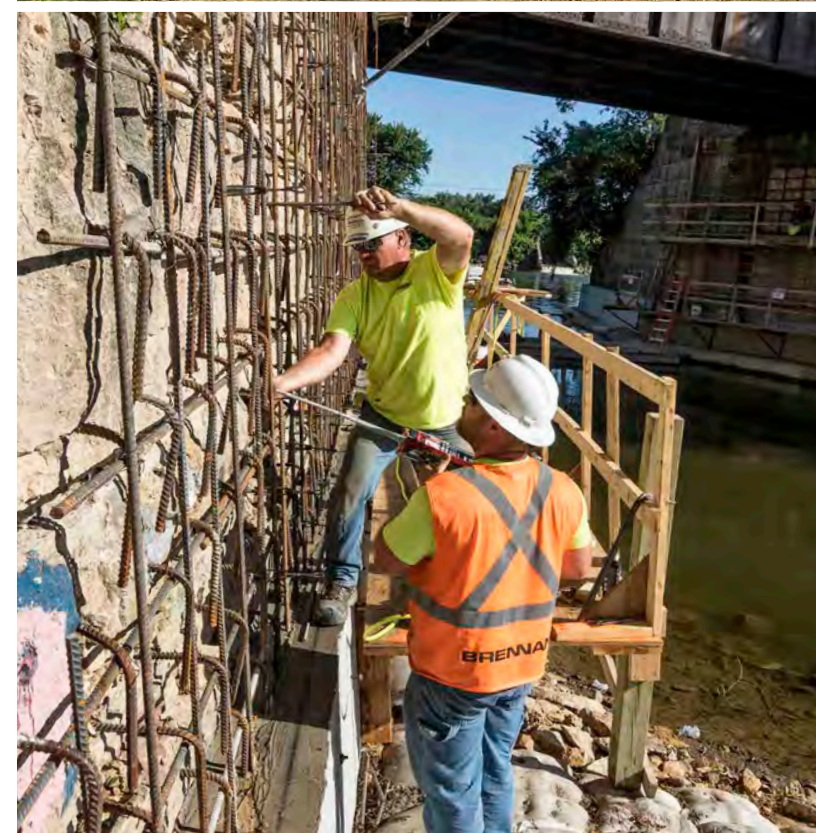
RAILROAD SERVICES

- » Bridge Construction
- » Culvert Replacement
- » Scour & Erosion Remediation
- » Underwater Construction
- » Underwater Inspections
- » Bridge Protection Systems
- » Environmental Response
- » Salvage & Marine Support

J.F. Brennan Company provides quality bridge construction, structural maintenance and environmental services to the rail transportation industry. Our ability to work above and below the waterline has led us to become one of a very few contractors that can self-perform work on the entire bridge structure. We also perform work away from the water with culvert maintenance and replacement services. Using our fleet of high-rail equipment we can safely access remote locations and carry out critical repairs throughout the network.

Brennan services all Class I railroads, as well as several shortline and regional railroads. We follow the strict safety requirements expected by our clients, and make it a priority to ensure that our work does not impede rail operations.

Clients routinely turn to us to develop creative solutions to unique problems. When critical response is required, we are available 24/7 to respond to derailments, environmental remedial needs, salvage, spills, and any other incidents that may hinder the right-of-way.



A CENTURY OF EXCELLENCE

Brennan is built on a strong, family oriented foundation. There is little that we haven't been able to accomplish over the last century. From mixing concrete in a wooden barrel on the back of a Ford Model T truck to surgically dredging contaminated sediments off the bottom of an inland waterway, Brennan has a rich tradition of accomplishing the indescribable.



James (Jim) and Eugene (Gene) Brennan leave the family farm and form Brennan Brothers Construction in Lansing, IA to begin building county bridges.

GENERAL
LA CROSSE WIS
BRENNAN BROS.
LANSING IA
CONTRACTORS



1930s

Jim moves to La Crosse, WI and opens a Brennan Brothers office next to the Milwaukee Road Roundhouse near the banks of the Black River.



1940s

With the World War II effort in full swing, Brennan provides bridge construction services to area railroads.



1950s

Brennan Brothers specializes in bridge construction for the U.S. and State DOTs, including work along the new Interstate System.

1953

Brennan Brothers increases its focus on marine construction when contracted by the U.S. Coast Guard to maintain navigational day markers between St. Paul and St. Louis.



1959

Jim and Gene decide to divide their business. Jim incorporates as J.F. Brennan Company, Inc. in La Crosse and Gene continues to operate as Brennan Construction in Lansing.

1960s

Brennan begins working for the U.S. Army Corps of Engineers to rebuild levees along the Mississippi River from Minnesota down to southern Iowa.



1970s

Growth continues as Brennan begins to provide mechanical dredging and Lock and Dam construction services to the U.S. Army Corps of Engineers.



1984

Brennan Marine Inc. is formed to provide harbor management services to the Port of La Crosse.

1989

Brennan purchases the hydraulic dredging operations of the F.J. Roberts Company to expand navigational dredging and habitat restoration capabilities.



1993

Brennan expands its services to hydroelectric generation facilities, focusing initially on above and below water specialty concrete placement.



2000

As the New Millennium begins, Brennan enters into the environmental remediation industry by dredging contaminated sediment from the Grand Calumet River in Gary, IN.



2013

Pro-Dive, Inc. of Ottawa, IL is purchased, making Brennan one of the largest dive contractors in the Midwestern United States.



2014

As railroads respond to growing market demands, Brennan forms a Rail Group to provide quality bridge construction and environmental response services.



2015

A new logo is adopted to represent Brennan's focus on the construction, transportation and environmental markets, as well as our above and below water capabilities. Expansion into Canada has also begun with the incorporation of J.F. Brennan Company Canada.





www.jfbrennan.com